



# Virginia Healthcare Workforce Briefs

Indicators from the Bureau of Labor Statistics'  
Current Employment Statistics Survey  
**Series 1: State & National Employment**

Series 1, Issue 71

February 2018

## Inside this Brief:

Virginia HC&SA Employment	2
Virginia Employment	2
National Employment	3
State Employment Growth	3
About the Data	4

Data in the report are seasonally adjusted. Self-employed persons, including health professionals in private practice, are not included.

## Highlights

- According to estimates that include the newly released annual benchmark data, Virginia's Health Care & Social Assistance (HC&SA) sector added 900 new jobs in January, which represents a one-month annualized employment growth rate of 2.5%. This represents the best monthly employment gain in Virginia's HC&SA sector since last October.
- Virginia's total nonfarm payroll also experienced strong growth during the month. In January, the state's total nonfarm payroll increased by 10,800 jobs. This translates into a one-month annualized growth rate of 3.3%, which is well above its 12-month growth rate of 0.6%.
- The national HC&SA sector created a total of 31,800 new jobs in January. This monthly employment gain is in line with long-term job growth in this sector. Over the past year, the national HC&SA sector has created a total of 32,033 jobs per month.
- The nation's total nonfarm payroll enjoyed its largest one-month gain since last October after increasing by 239,000 jobs in January. This gain represents the third time in the past four months in which the nation's total nonfarm payroll has grown by more than 200,000.

## Data in Brief

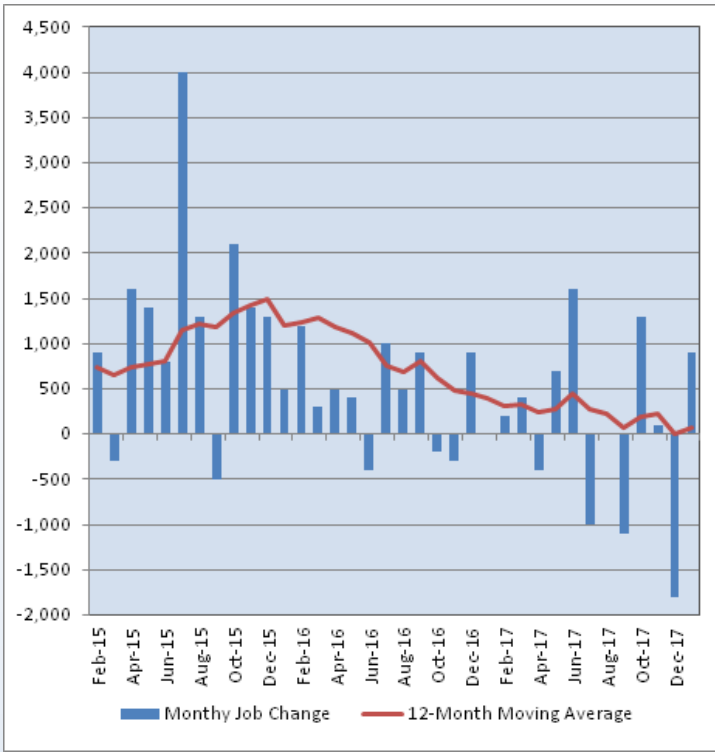
Seasonally Adjusted*	Employment, in Thousands				Growth Rate, Annualized		
	Jan. 2017	Oct. 2017	Dec. 2017	Jan. 2018	12 Month	3 Month	1 Month
<b>Nonfarm, Total</b>							
Virginia	3,940.2	3,956.3	3,954.1	3,964.9	0.6%	0.9%	3.3%
National	145,696.0	147,234.0	147,625.0	147,864.0	1.5%	1.7%	2.0%
<b>Health Care &amp; Social Assistance</b>							
Virginia	433.6	435.3	433.6	434.5	0.2%	-0.7%	2.5%
National	19,331.8	19,625.7	19,684.4	19,716.2	2.0%	1.9%	2.0%
<b>All Other Nonfarm</b>							
Virginia	3,506.6	3,521.0	3,520.5	3,530.4	0.7%	1.1%	3.4%
National	126,364.2	127,608.3	127,940.6	128,147.8	1.4%	1.7%	2.0%

Preliminary estimates are italicized

\*Seasonally adjusted data are adjusted by the Bureau of Labor Statistics to account for weather, holidays and other seasonal changes. Economists use seasonally adjusted data to reveal underlying trends over time. This series uses seasonally adjusted data exclusively. When comparing data in this series to other HWDC series, or publications from other sources, it is important to note whether the data reported have been seasonally adjusted.

## Virginia HC&SA Employment

**Figure 1: Monthly Change in Employment in Virginia’s Health Care & Social Assistance Sector, Seasonally Adjusted.**



According to new data released on Monday, March 12, 2018, by the U.S. Department of Labor, Bureau of Labor Statistics, Virginia’s HC&SA sector created 900 new jobs in January, which represents a one-month annualized employment growth rate of 2.5%. Although this month’s increase represents the largest one-month employment gain since last October, the result did little to reverse the long-term downward trend in HC&SA employment growth in the state.

During the second half of 2017, employment in Virginia’s HC&SA sector fell by 2,500 jobs. This decline was due to three months in which HC&SA employment in the state fell by at least 1,000 jobs per month. Before this recent period of employment weakness, Virginia’s HC&SA sector had not lost more than 1,000 jobs per month in more than four years.

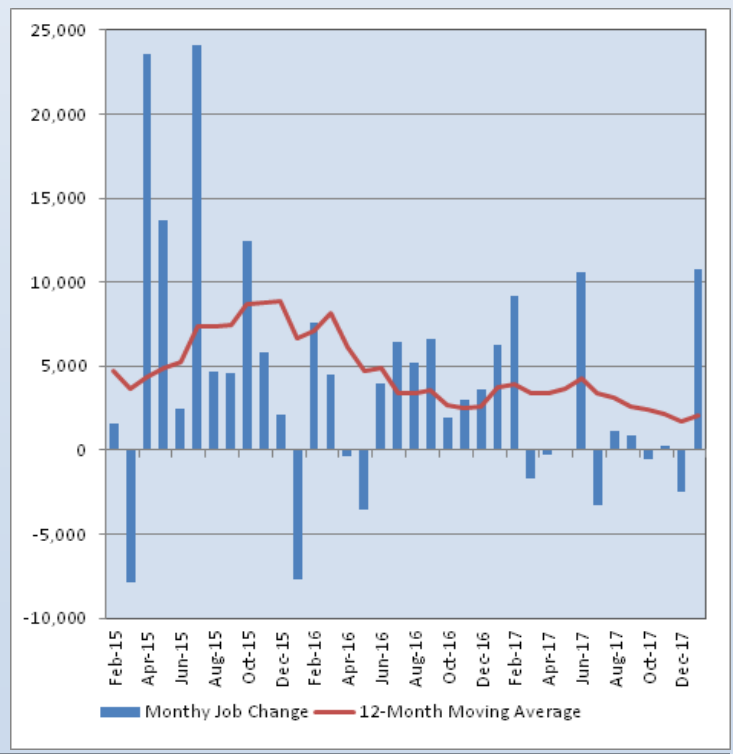
HC&SA employment growth in the state over the past 12 months has not been much better. During the past year, Virginia’s HCSA sector has increased employment by 900 jobs. This one-year increase translates into an average employment gain of just 75 HC&SA jobs per month.

## Virginia Employment

Just like Virginia’s HC&SA sector, employment growth in the state’s overall economy was nonexistent during the second half of 2017. In fact, Virginia’s total nonfarm payroll declined by 4,000 in those six months. However, employment in Virginia’s economy began the new year on a strong note as the state’s total nonfarm payroll increased by 10,800 in January. This gain translates into a 3.3% annualized growth rate, which far exceeds both its current three-month and 12-month growth rates. In addition, January’s increase represents the largest one-month gain in the state’s total nonfarm payroll since October 2015.

With this impressive growth, the state is on an early path to far exceed its full-year employment gains from 2017. In fact, January’s increase already represents more than half of the state’s full-year growth in its total nonfarm payroll in 2017. Last year, Virginia’s total nonfarm payroll increased by 20,200. Regardless, the long-term growth trend in Virginia’s total nonfarm payroll remains weak. Over the past 12 months, the state’s total nonfarm payroll has increased by an average of 2,058 per month. One year ago, this 12-month moving average was 3,767.

**Figure 2: Monthly Change in Employment in Virginia’s Total Non-farm Payroll, Seasonally Adjusted.**

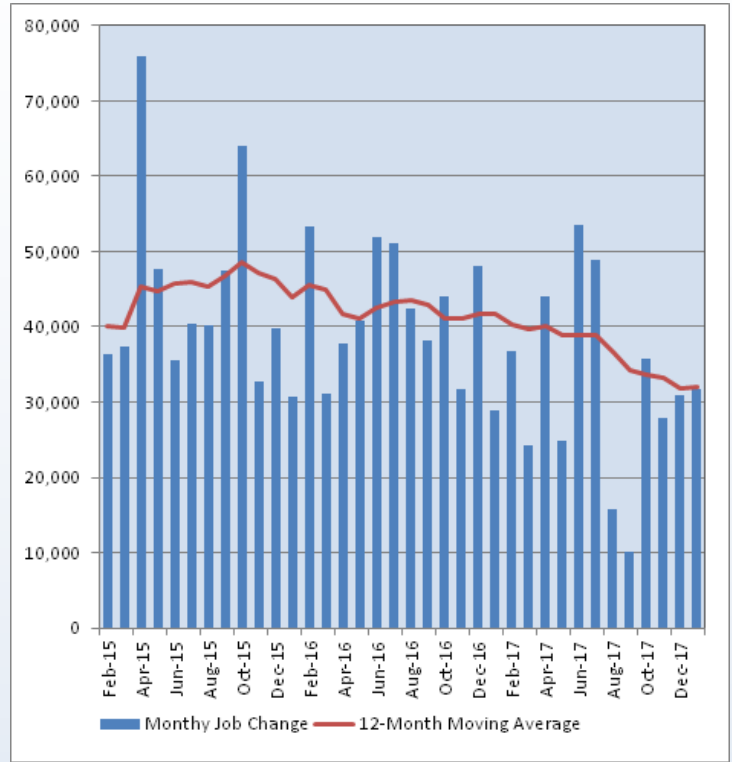


### National Employment

In January, the national HC&SA sector experienced decent job growth that slightly exceeded the employment gains from the previous two months. In the fourth quarter of 2017, employment in the national HC&SA sector increased by an average of 31,500 jobs per month. Employment growth in the sector slightly exceeded this average in January as 31,800 HC&SA jobs were created across the state during the month. This gain represents a one-month annualized employment growth rate of 2.0%, which is also equivalent to its current 12-month employment growth rate. But just like in Virginia, long-term employment growth in the national HC&SA sector has been trending downward. The current 12-month moving average of the change in national HC&SA employment is 32,033, a decline of 23% from the year-ago period.

Meanwhile, the national economy enjoyed a strong month of employment growth in January as the nation’s total nonfarm payroll increased by 239,000 during the month. This gain represents a one-month growth rate of 2.0%. In addition, January’s result represents the strongest one-month gain in the nation’s total nonfarm payroll since an increase of 271,000 last October.

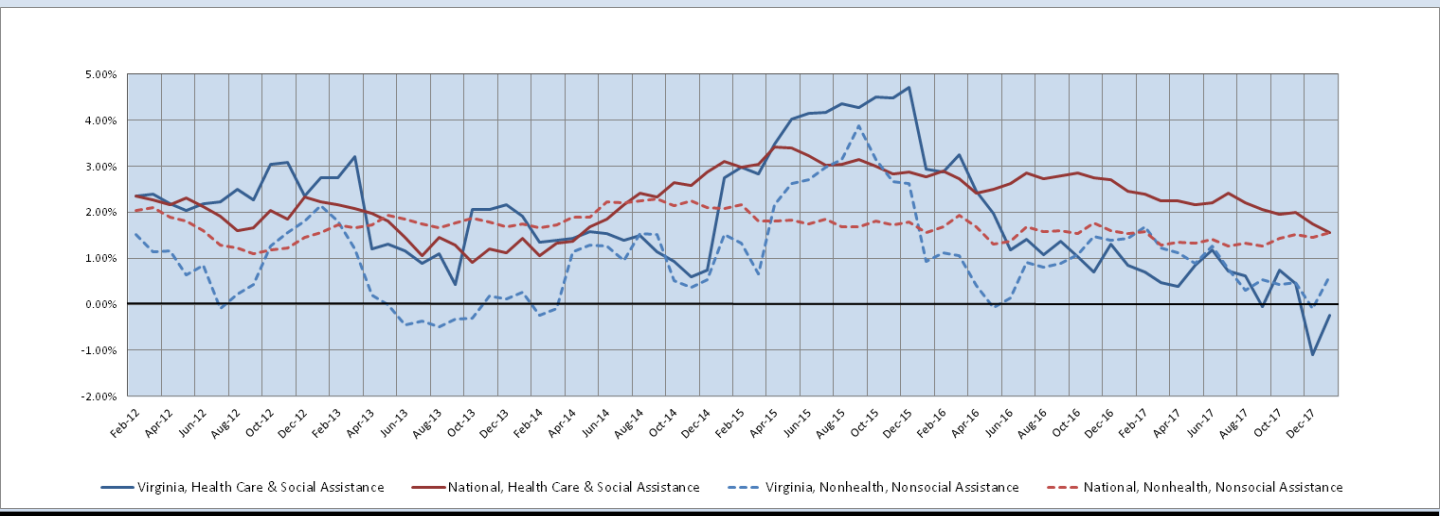
**Figure 3: Monthly Change in Employment in National Health Care & Social Assistance Sector, Seasonally Adjusted**



### State Employment Growth

Despite the employment growth in Virginia’s HC&SA sector in January, its six-month employment growth rate moving average remains negative at -0.23%. Although this represents an improvement relative to its -1.10% growth rate in December, the six-month employment growth rate moving average of Virginia’s HC&SA sector still remains on a downward trajectory. On the other hand, the six-month moving average of the growth rate in Virginia’s total nonfarm payroll rebounded strongly in January from -0.08% to 0.62%, thereby reaching a six-month high. As for the national HC&SA sector, its six-month employment growth rate moving average fell from 1.75% to 1.56% in January, while the corresponding moving average for the nation’s total nonfarm payroll increased slightly from 1.45% to 1.56%

**Figure 4: Six-Month Moving Average, Employment Growth, Seasonally Adjusted**



Healthcare Workforce  
Data Center

Perimeter Center  
9960 Mayland Drive, Suite 300  
Henrico, VA 23233-1463

Phone: (804) 367-2115  
Fax: (804) 527-4434  
E-mail: [hwdc@dhp.virginia.gov](mailto:hwdc@dhp.virginia.gov)

[www.dhp.virginia.gov/hwdc/](http://www.dhp.virginia.gov/hwdc/)

*HWDC Staff:*

Elizabeth Carter, Ph.D. <i>Executive Director</i>	Yetty Shobo, Ph.D. <i>Deputy Director</i>
Laura Jackson <i>Operations Manager</i>	Christopher Coyle <i>Research Assistant</i>

Follow us on. . .

Tumblr: <http://vahwdc.tumblr.com/>

## About the Data

Data in this report are from the US Department of Labor, Bureau of Labor Statistics' Current Employment Statistics program. The CES program surveys about 143,000 businesses and government agencies monthly. Unless otherwise noted, this series uses seasonally-adjusted data that removes seasonal variations related to weather, holidays, weekends, seasons and other predictable variations. This allows us to better examine underlying trends in the labor market. Data from recent months are preliminary and subject to revision in future releases from the CES. Revisions will be reported in future editions of this series. Unless otherwise noted, the CES data presented in this series:

### Includes:

- ◆ Data on employed individuals drawing a paycheck (payroll employees).
- ◆ All employees, regardless of role, occupation or hours worked.
- ◆ HC&SA employees in the private sector only.
- ◆ Persons employed by health professionals in private practice.
- ◆ Both government and private sector workers in nonfarm employment data.

### Does not include:

- ◆ Self-employed workers or volunteers, including health professionals in private practice.
- ◆ HC&SA employees in the public sector. (These are counted as government workers in monthly reports).
- ◆ Information on hours worked or the quality of employment.
- ◆ Government workers in HC&SA level data. (Government workers, regardless of occupation and role, are classified as public sector employees).

The Department of Health Professions Healthcare Workforce Data Center works to improve the data collection and measurement of Virginia's healthcare workforce through regular assessment of workforce supply and demand issues among the 80 professions and 350,000 practitioners licensed in Virginia by DHP.

The HWDC collects data on Virginia's licensed health professionals through surveys completed during the online license renewal and application process. Survey results and data may be accessed on our website: [www.dhp.virginia.gov/hwdc/](http://www.dhp.virginia.gov/hwdc/).

The HWDC also provides a series of Virginia Healthcare Workforce Briefs based on data collected by the US Department of Labor's Bureau of Labor Statistics and the US Department of Commerce' Bureau of Economic Analysis.

Virginia Healthcare Workforce Briefs:

Series 1: State & National Employment (Monthly)

Series 2: Virginia Regional Employment (Monthly)

Series 3: Income & Compensation (Quarterly)